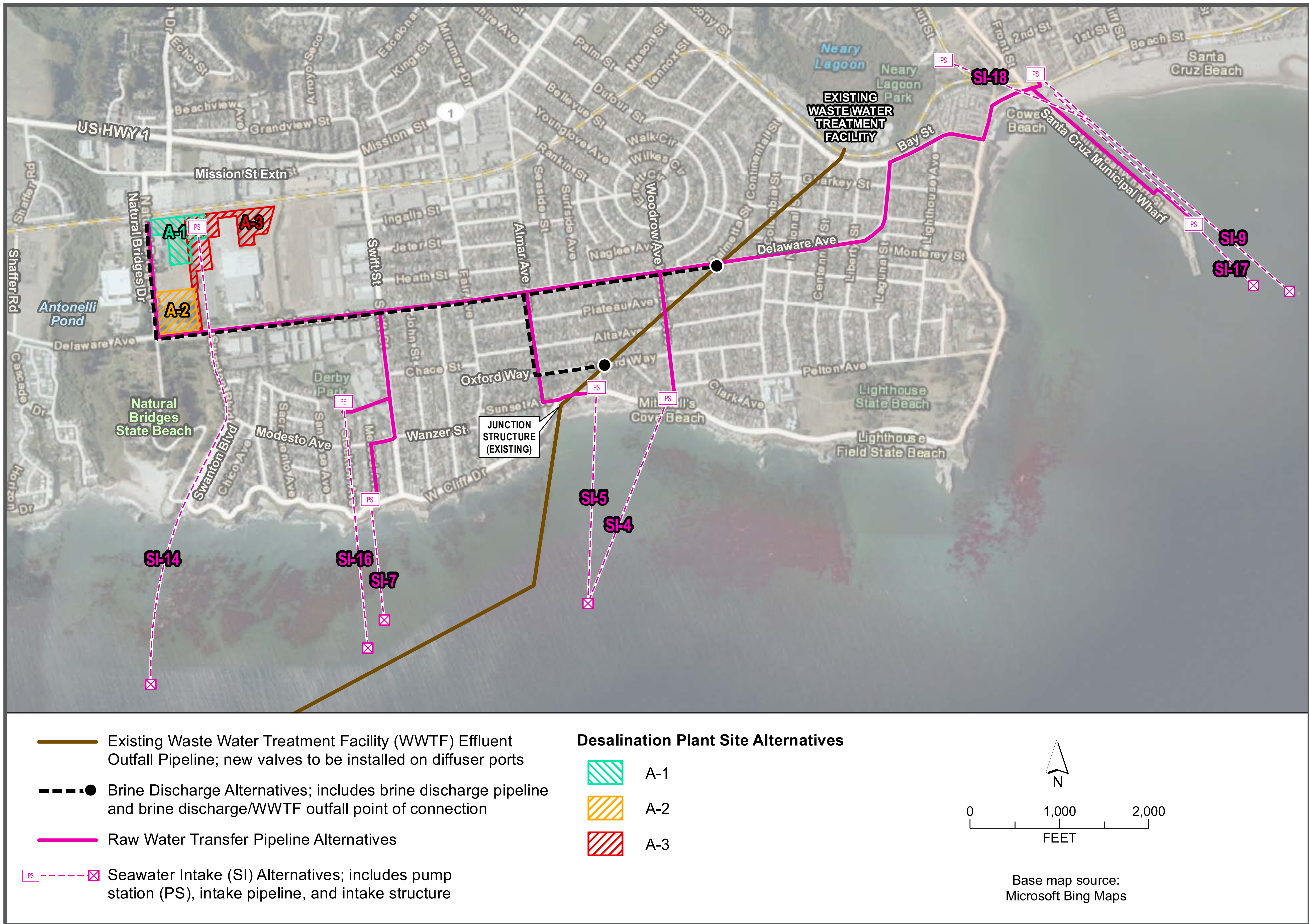


What are the project component alternatives and how will they be selected?

A wide range of project component alternatives were considered during the development of the proposed project.

The Draft EIR analyzes three alternative desalination plant sites and eight alternative seawater intake sites at an equal level of detail in the Draft EIR. The Draft EIR provides a comparison of the environmental impacts and the ability of each component location alternative to meet the proposed project objectives.

The City Council and the District Board will weigh all information related to these site alternatives to ultimately pick one final seawater intake site and one final desalination plant site.



Only one plant site and one intake site would ultimately be selected.